

ADARSH SHIVAN

 My Account

 Logout



Profile Settings

Leave Management

Evaluation

▶ College Evaluation

Faculty Evaluation

## EVALUATIONS

# CURRICULUM FEEDBACK FOR STUDENTS: 2020-2023.

### Instructions

Please Fill all the Details

Proceed



- Profile Settings
- Leave Management
- Evaluation**
- ▶ College Evaluation
- Faculty Evaluation

### EVALUATIONS

2020 BCA A SEC

#### CURRICULUM FEEDBACK FOR STUDENTS: 2020-2023.

1. Is the curriculum relevant to the job market

- a) Strongly disagree  b) Disagree
- c) Satisfactory  d) Agree
- e) Strongly agree

2. Are the certificate courses/add on courses offered relevant to the job market

- a) Strongly disagree  b) Disagree
- c) Satisfactory  d) Agree
- e) Strongly Agree

3. Teaching methods and pedagogy help you to learn better

- a) Strongly disagree  b) Disagree
- c) Satisfactory  d) Agree
- e) Strongly Agree

4. Does internships help you to gain better knowledge

- a) Yes  b) No
- c) Maybe

5. Skill development courses offered in the college helps to bridge the gap between the syllabus and job market requirements

- a) Strongly disagree  b) Disagree
- c) Satisfactory  d) Agree
- e) Strongly Agree

6. Did you learn what you intended to?

a)Strongly disagree

b)Disagree

c)Satisfactory

d)Agree

e)Strongly Agree

7. The institution provides multiple opportunities to learn and grow.

a)Strongly disagree

b)Disagree

c)Satisfactory

d)Agree

e)Strongly Agree

8. You are informed every time about the core competencies ,course and programme outcome

a)Strongly disagree

b)Disagree

c)Satisfactory

d)Agree

e)Strongly Agree

9. The teachers illustrate the concepts through examples and applications

a)Strongly disagree

b)Disagree

c)Satisfactory

d)Agree

e)Strongly Agree

10. The institution makes effort to engage students in the monitoring, review and continuous quality improvement of the teaching learning process

a)Strongly disagree

b)Disagree

c)Satisfactory

d)Agree

e)Strongly Agree

11. Teachers encourage you to participate in extracurricular activities.

11. Teachers encourage you to participate in extracurricular activities.

a)Strongly disagree

b)Disagree

c)Satisfactory

d)Agree

e)Strongly Agree

12. The overall quality of teaching-learning process in your institution is very good

a)Strongly disagree

b)Disagree

c)Satisfactory

d)Agree

e)Strongly Agree

13. Efforts are made by the institution/ teachers to inculcate soft skills, life skills and employability skills to make you ready for the world of work.

a)Strongly disagree

b)Disagree

c)Satisfactory

d)Agree

e)Strongly Agree

14. The institute/ teachers use student centric methods, such as experiential learning, participative learning and problem solving methodologies for enhancing learning experiences.

a)Strongly disagree

b)Disagree

c)Satisfactory

d)Agree

e)Strongly Agree



Profile Settings

Leave Management

Evaluation

▶ College Evaluation

Faculty Evaluation

## EVALUATIONS

# CURRICULUM FEEDBACK FOR STUDENTS: 2020-2023.

### Instructions

Please Fill all the Details

Proceed

ABINS K CHAC...

 My Account

 Logout



- Profile Settings
- Leave Management
- Evaluation**
- ▶ College Evaluation
- Faculty Evaluation

## EVALUATIONS

### CURRICULUM FEEDBACK FOR STUDENTS: 2020-2023.

1. Is the curriculum relevant to the job market

a)Strongly disagree

b)Disagree

c)Satisfactory

d)Agree

e)Strongly agree

2. Are the certificate courses/add on courses offered relevant to the job market:

a)Strongly disagree

b)Disagree

c)Satisfactory

d)Agree

e)Strongly Agree

3. Teaching methods and pedagogy help you to learn better

a)Strongly disagree

b)Disagree

c)Satisfactory

d)Agree

e)Strongly Agree

4. Does internships help you to gain better knowledge

a)Yes

b)No

c)Maybe

5. Skill development courses offered in the college helps to bridge the gap between the syllabus and job market requirements

a)Strongly disagree

b)Disagree

c)Satisfactory

d)Agree

e)Strongly Agree

6. Did you learn what you intended to?

a)Strongly disagree

b)Disagree

c)Satisfactory

d)Agree

e)Strongly Agree

7. The institution provides multiple opportunities to learn and grow.

a)Strongly disagree

b)Disagree

c)Satisfactory

d)Agree

e)Strongly Agree

8. You are informed every time about the core competencies ,course and programme outcome

a)Strongly disagree

b)Disagree

c)Satisfactory

d)Agree

e)Strongly Agree

9. The teachers illustrate the concepts through examples and applications

a)Strongly disagree

b)Disagree

c)Satisfactory

d)Agree

e)Strongly Agree

10. The institution makes effort to engage students in the monitoring, review and continuous quality improvement of the teaching learning process

a)Strongly disagree

b)Disagree

c)Satisfactory

d)Agree

e)Strongly Agree

11. Teachers encourage you to participate in extracurricular activities.

a)Strongly disagree

b)Disagree

c)Satisfactory

d)Agree

e)Strongly Agree

12. The overall quality of teaching-learning process in your institution is very good

a)Strongly disagree

b)Disagree

c)Satisfactory

d)Agree

e)Strongly Agree

13. Efforts are made by the institution/ teachers to inculcate soft skills, life skills and employability skills to make you ready for the world of work.

a)Strongly disagree

b)Disagree

c)Satisfactory

d)Agree

e)Strongly Agree

14. The institute/ teachers use student centric methods, such as experiential learning, participative learning and problem solving methodologies for enhancing learning experiences.

a)Strongly disagree

b)Disagree

c)Satisfactory

d)Agree

e)Strongly Agree



EVALUATIONS

CURRICULUM FEEDBACK FOR STUDENTS: 2020-2023.

1. Is the curriculum relevant to the job market

- a) Strongly disagree  b) Disagree  
 c) Satisfactory  d) Agree  
 e) Strongly agree

2. Are the certificate courses/add on courses offered relevant to the job market

- a) Strongly disagree  b) Disagree  
 c) Satisfactory  d) Agree  
 e) Strongly Agree

3. Teaching methods and pedagogy help you to learn better

- a) Strongly disagree  b) Disagree  
 c) Satisfactory  d) Agree  
 e) Strongly Agree

4. Does internships help you to gain better knowledge

- a) Yes  b) No  
 c) Maybe

5. Skill development courses offered in the college helps to bridge the gap between the syllabus and job market requirements

- a) Strongly disagree  b) Disagree  
 c) Satisfactory  d) Agree  
 e) Strongly Agree



- Profile Settings
- Leave Management
- Evaluation**
- ▶ College Evaluation
- Faculty Evaluation

6. Did you learn what you intended to?

a)Strongly disagree

b)Disagree

c)Satisfactory

d)Agree

e)Strongly Agree

7. The institution provides multiple opportunities to learn and grow.

a)Strongly disagree

b)Disagree

c)Satisfactory

d)Agree

e)Strongly Agree

8. You are informed every time about the core competencies ,course and programme outcome

a)Strongly disagree

b)Disagree

c)Satisfactory

d)Agree

e)Strongly Agree

9. The teachers illustrate the concepts through examples and applications

a)Strongly disagree

b)Disagree

c)Satisfactory

d)Agree

e)Strongly Agree

10. The institution makes effort to engage students in the monitoring, review and continuous quality improvement of the teaching learning process

a)Strongly disagree

b)Disagree

c)Satisfactory

d)Agree

e)Strongly Agree

11. Teachers encourage you to participate in extracurricular activities.

a)Strongly disagree

b)Disagree

c)Satisfactory

d)Agree

e)Strongly Agree

12. The overall quality of teaching-learning process in your institution is very good

a)Strongly disagree

b)Disagree

c)Satisfactory

d)Agree

e)Strongly Agree

13. Efforts are made by the institution/ teachers to inculcate soft skills, life skills and employability skills to make you ready for the world of work.

a)Strongly disagree

b)Disagree

c)Satisfactory

d)Agree

e)Strongly Agree

14. The institute/ teachers use student centric methods, such as experiential learning, participative learning and problem solving methodologies for enhancing learning experiences.

a)Strongly disagree

b)Disagree

c)Satisfactory

d)Agree

e)Strongly Agree

## EVALUATIONS

### CURRICULUM FEEDBACK FOR STUDENTS: 2020-2023.

1. Is the curriculum relevant to the job market

- a) Strongly disagree  b) Disagree
- c) Satisfactory  d) Agree
- e) Strongly agree

2. Are the certificate courses/add on courses offered relevant to the job market

- a) Strongly disagree  b) Disagree
- c) Satisfactory  d) Agree
- e) Strongly Agree

3. Teaching methods and pedagogy help you to learn better

- a) Strongly disagree  b) Disagree
- c) Satisfactory  d) Agree
- e) Strongly Agree

4. Does Internships help you to gain better knowledge

- a) Yes  b) No
- c) Maybe

5. Skill development courses offered in the college helps to bridge the gap between the syllabus and job market requirements

- a) Strongly disagree  b) Disagree
- c) Satisfactory  d) Agree
- e) Strongly Agree

Profile Settings

Leave Management

Evaluation

▶ College Evaluation

Faculty Evaluation

6. Did you learn what you intended to?

a)Strongly disagree

b)Disagree

c)Satisfactory

d)Agree

e)Strongly Agree

7. The institution provides multiple opportunities to learn and grow.

a)Strongly disagree

b)Disagree

c)Satisfactory

d)Agree

e)Strongly Agree

8. You are informed every time about the core competencies ,course and programme outcome

a)Strongly disagree

b)Disagree

c)Satisfactory

d)Agree

e)Strongly Agree

9. The teachers illustrate the concepts through examples and applications

a)Strongly disagree

b)Disagree

c)Satisfactory

d)Agree

e)Strongly Agree

10. The institution makes effort to engage students in the monitoring, review and continuous quality improvement of the teaching learning process

a)Strongly disagree

b)Disagree

c)Satisfactory

d)Agree

e)Strongly Agree

11. Teachers encourage you to participate in extracurricular activities.

a)Strongly disagree

b)Disagree

c)Satisfactory

d)Agree

e)Strongly Agree

12. The overall quality of teaching-learning process in your institution is very good

a)Strongly disagree

b)Disagree

c)Satisfactory

d)Agree

e)Strongly Agree

13. Efforts are made by the institution/ teachers to inculcate soft skills, life skills and employability skills to make you ready for the world of work.

a)Strongly disagree

b)Disagree

c)Satisfactory

d)Agree

e)Strongly Agree

14. The institute/ teachers use student centric methods, such as experiential learning, participative learning and problem solving methodologies for enhancing learning experiences.

a)Strongly disagree

b)Disagree

c)Satisfactory

d)Agree

e)Strongly Agree



- Profile Settings
- Leave Management
- Evaluation**
  - ▶ College Evaluation
- Faculty Evaluation

## EVALUATIONS

DEEPTHI S  
2020 BBA A SEC

### CURRICULUM FEEDBACK FOR STUDENTS: 2020-2023.

1. Is the curriculum relevant to the job market

- a) Strongly disagree  b) Disagree
- c) Satisfactory  d) Agree
- e) Strongly agree

2. Are the certificate courses/add on courses offered relevant to the job market

- a) Strongly disagree  b) Disagree
- c) Satisfactory  d) Agree
- e) Strongly Agree

3. Teaching methods and pedagogy help you to learn better

- a) Strongly disagree  b) Disagree
- c) Satisfactory  d) Agree
- e) Strongly Agree

4. Does internships help you to gain better knowledge

- a) Yes  b) No
- c) Maybe

5. Skill development courses offered in the college helps to bridge the gap between the syllabus and job market requirements

- a) Strongly disagree  b) Disagree
- c) Satisfactory  d) Agree
- e) Strongly Agree

6. Did you learn what you intended to?

a)Strongly disagree

b)Disagree

c)Satisfactory

d)Agree

e)Strongly Agree

7. The institution provides multiple opportunities to learn and grow.

a)Strongly disagree

b)Disagree

c)Satisfactory

d)Agree

e)Strongly Agree

8. You are informed every time about the core competencies ,course and programme outcome

a)Strongly disagree

b)Disagree

c)Satisfactory

d)Agree

e)Strongly Agree

9. The teachers illustrate the concepts through examples and applications

a)Strongly disagree

b)Disagree

c)Satisfactory

d)Agree

e)Strongly Agree

10. The institution makes effort to engage students in the monitoring, review and continuous quality improvement of the teaching learning process

a)Strongly disagree

b)Disagree

c)Satisfactory

d)Agree

e)Strongly Agree



11. Teachers encourage you to participate in extracurricular activities.

a)Strongly disagree

b)Disagree

c)Satisfactory

d)Agree

e)Strongly Agree

12. The overall quality of teaching-learning process in your institution is very good

a)Strongly disagree

b)Disagree

c)Satisfactory

d)Agree

e)Strongly Agree

13. Efforts are made by the institution/ teachers to inculcate soft skills, life skills and employability skills to make you ready for the world of work.

a)Strongly disagree

b)Disagree

c)Satisfactory

d)Agree

e)Strongly Agree

14. The institute/ teachers use student centric methods, such as experiential learning, participative learning and problem solving methodologies for enhancing learning experiences.

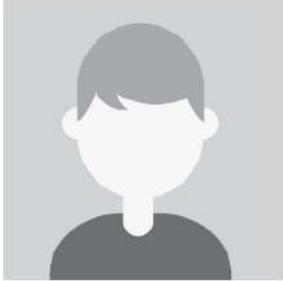
a)Strongly disagree

b)Disagree

c)Satisfactory

d)Agree

e)Strongly Agree



- Profile Settings
- Leave Management
- Evaluation**
- ▶ College Evaluation
- Faculty Evaluation

## EVALUATIONS

JOBIN ABRAHAM  
2020 BBA A SEC

### CURRICULUM FEEDBACK FOR STUDENTS: 2020-2023.

1. Is the curriculum relevant to the job market?

- a) Strongly disagree  b) Disagree
- c) Satisfactory  d) Agree
- e) Strongly agree

2. Are the certificate courses/add on courses offered relevant to the job market?

- a) Strongly disagree  b) Disagree
- c) Satisfactory  d) Agree
- e) Strongly Agree

3. Teaching methods and pedagogy help you to learn better

- a) Strongly disagree  b) Disagree
- c) Satisfactory  d) Agree
- e) Strongly Agree

4. Does internships help you to gain better knowledge

- a) Yes  b) No
- c) Maybe

5. Skill development courses offered in the college helps to bridge the gap between the syllabus and job market requirements

- a) Strongly disagree  b) Disagree
- c) Satisfactory  d) Agree
- e) Strongly Agree

6. Did you learn what you intended to?

6. Did you learn what you intended to?

a)Strongly disagree

b)Disagree

c)Satisfactory

d)Agree

e)Strongly Agree

7. The institution provides multiple opportunities to learn and grow.

a)Strongly disagree

b)Disagree

c)Satisfactory

d)Agree

e)Strongly Agree

8. You are informed every time about the core competencies ,course and programme outcome

a)Strongly disagree

b)Disagree

c)Satisfactory

d)Agree

e)Strongly Agree

9. The teachers illustrate the concepts through examples and applications

a)Strongly disagree

b)Disagree

c)Satisfactory

d)Agree

e)Strongly Agree

10. The institution makes effort to engage students in the monitoring, review and continuous quality improvement of the teaching learning process

a)Strongly disagree

b)Disagree

c)Satisfactory

d)Agree

e)Strongly Agree

11. Teachers encourage you to participate in extracurricular activities.

a)Strongly disagree

b)Disagree

c)Satisfactory

d)Agree

e)Strongly Agree

12. The overall quality of teaching-learning process in your institution is very good

a)Strongly disagree

b)Disagree

c)Satisfactory

d)Agree

e)Strongly Agree

13. Efforts are made by the institution/ teachers to inculcate soft skills, life skills and employability skills to make you ready for the world of work.

a)Strongly disagree

b)Disagree

c)Satisfactory

d)Agree

e)Strongly Agree

14. The institute/ teachers use student centric methods, such as experiential learning, participative learning and problem solving methodologies for enhancing learning experiences.

a)Strongly disagree

b)Disagree

c)Satisfactory

d)Agree

e)Strongly Agree